

TurboWin on third party ships of the JCOMM SOT VOS Programme

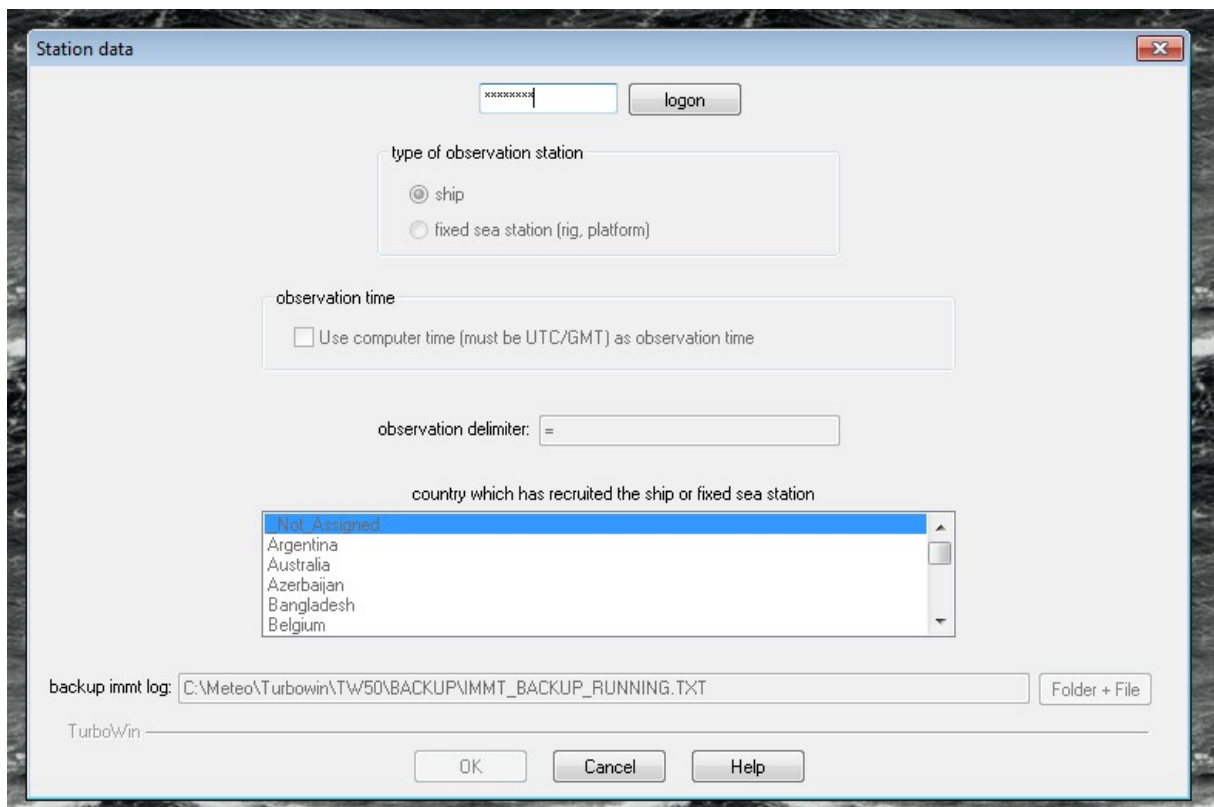
Version 1.2 – 13/11/2015

Preparation

- Download zip file (342 Mo) : <http://www.knmi.nl/turbowin/download/turbowin50.zip> on a USB disk
- Send a message to mkramp@jcommops.org and indicate where and when you plan to start submitting data, and the radio call sign and eMail account used on board.
- Set computer time on board to UTC
- Unzip the file and install the software

Configuration - Part 1

- Open TurboWin. At the first start, you must specify some metadata
- Go to menu : maintenance -> station data
- **_Turbo45** for logon
- Chose "Ship", "Use computer time", and "Not_Assigned" as country



- Click OK.

- Enter ship name
- Enter IMO number (if you have one)
- "Selected Ship" as default
- Leave national groupes empty
- Enter height of wind sensor above sea level (Ex. : 20)
- Enter depth of sea temperature sensor (SST, round up, ex. : 1)
- Set wind sea and swell to estimation
- Enter height of barometer above sea level (Ex. : 2)
- Enter draft of ship (Ex. : 3)

The screenshot shows the 'Station data (ship)' dialog box with the following fields and values:

- ship name: TITANIC
- IMO number: (empty)
- message form (type reporting ship):
 - VOSCLim ship [\[visit the web site\]](#)
 - selected ship
 - supplementary ship; with sst*
 - supplementary ship; without sst*
 - auxiliary ship
- code form:
 - alphanumeric (FM13)
 - BUFR
 - compressed or E-mail
- special projects participant, if applicable:
 - ASAP (select Info menu for pdf)
 - SOOP (select Info menu for pdf)
 - other, namely: (empty)
- * sst only when instruments have been supplied
- national group(s), if applicable:
 - national group 1 symbolic name: (empty)
 - national group 2 symbolic name: (empty)
 - national group 3 symbolic name: (empty)
 - national group 4 symbolic name: (empty)
 - national group 5 symbolic name: (empty)
- average height of anemometer (metres, rounded) above sea level, if appl.: 20
- average depth of sst measurem. (metres, rounded) below sea level, if appl.: 1
- method for determining waves, if applicable: wind sea and swell estimated
- height of the barometer above the summer load line (metres, e.g. 20.8): 2
- distance from bottom of the keel to summer load line (metres, e.g. 9.1): 3

TurboWin

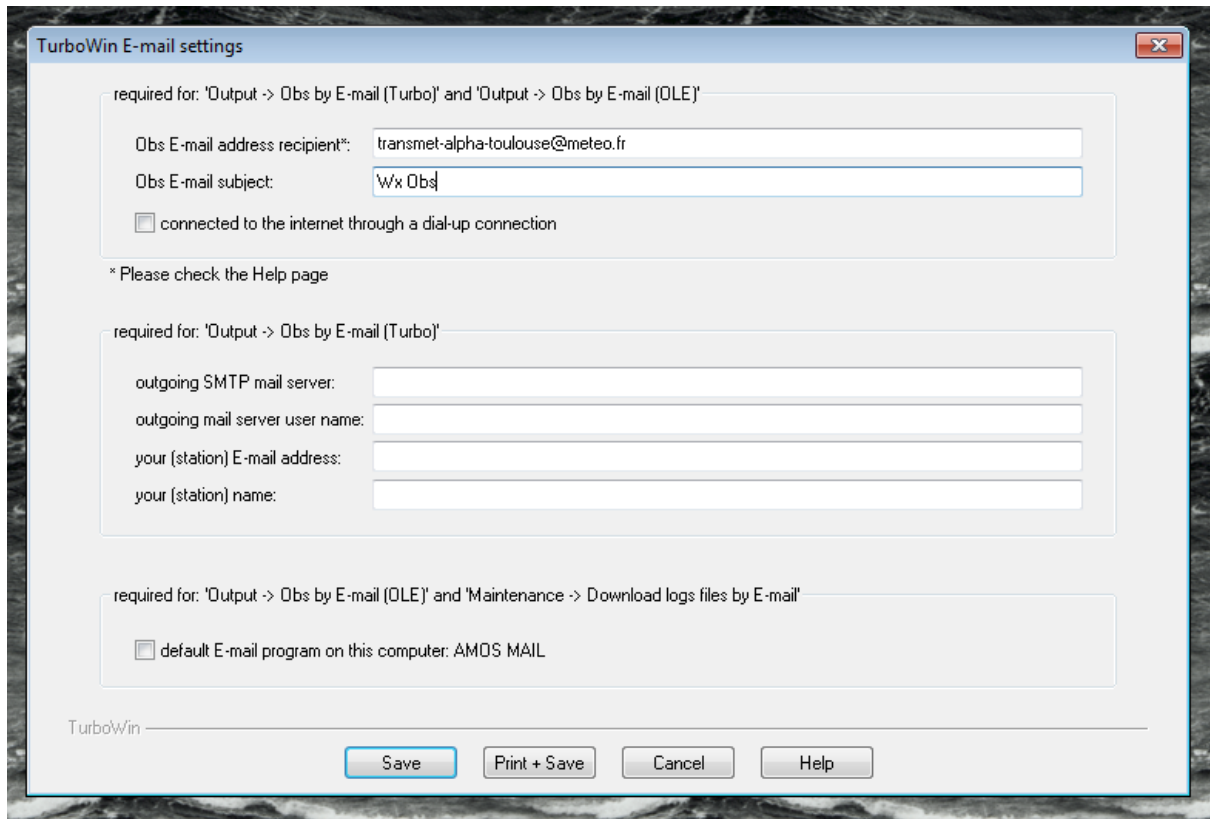
Buttons: Save, Print + Save, Cancel, Help

- Restart TurboWin. You can now enter data.

If computer time is not UTC, you must enter it manually.

Configuration - Part 2

- Use menu Maintenance -> "E-mail settings" to configure mail client (OLE, to : transmet-alpha-toulouse@meteo.fr, subject : Wx Obs)

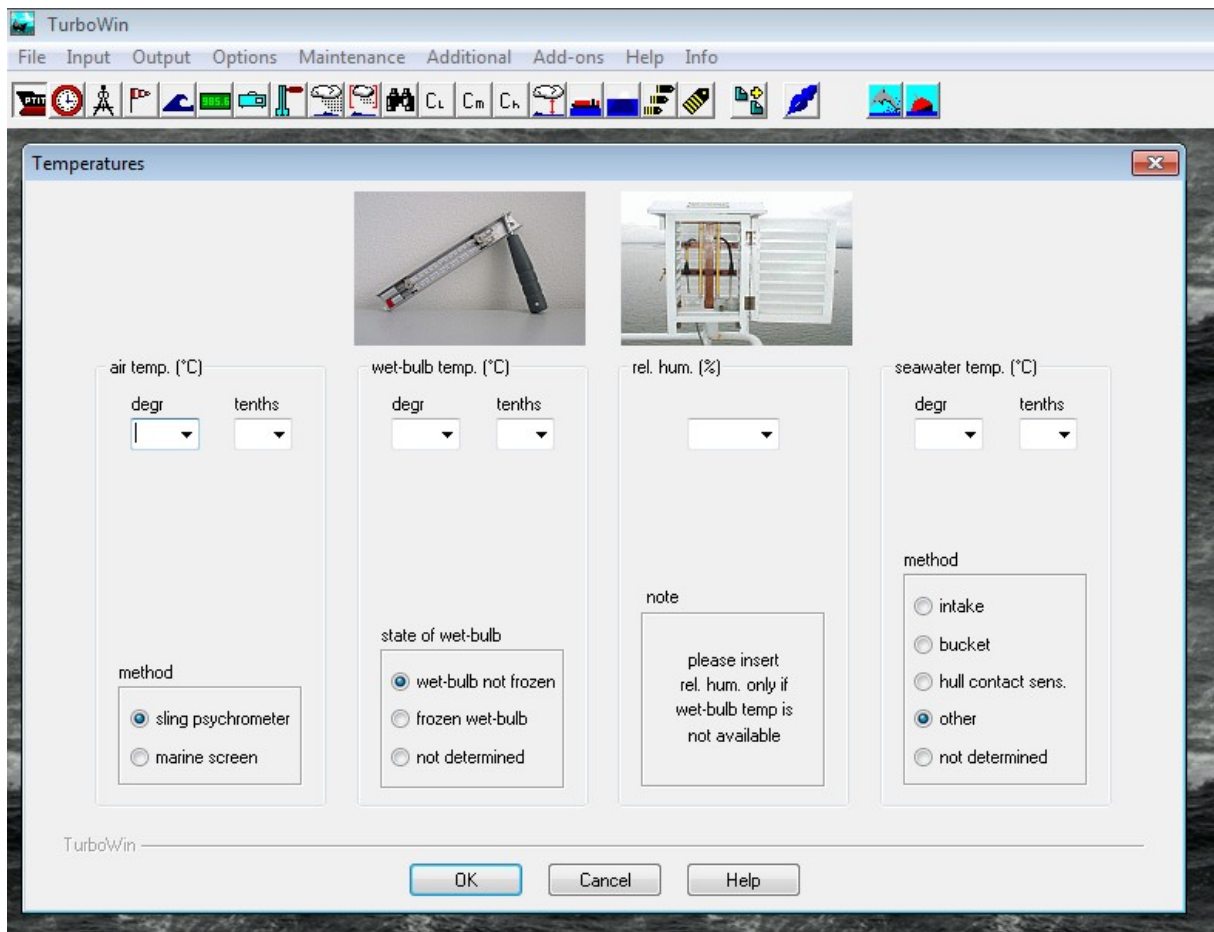


- Use menu Maintenance -> "Observers" to enter observer names
- Use menu Maintenance -> "Captains" to enter master name
- Check the status of your onboard instruments with reference sensors at port, for offsets.
- Enter observations (priorities are bold) :

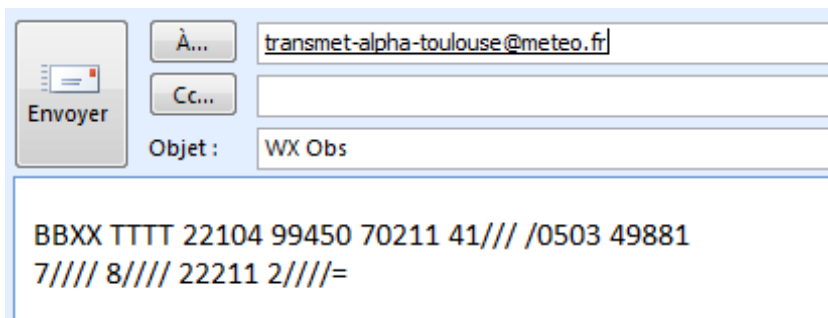
Go through the icons till the name of the captain.

- **Call Sign** (without mask)
- **Time**
- **Position** (check your position on the upopping chart))
- Wind
- Waves (if possible, at sea)
- **Barometer** (without barograph)
- Temperatures (without wet bulb and rel. Hum., normally unavailable)
- Visibility (if possible, at sea)
- **Observer**


- If you are having doubts regarding a parameter, do not enter that data.
- Add cloud data etc if possible, but that's less important – and more difficult!



- Chose Output in the menu, and "Obs by E-mail (OLE)" for example (depends on your client)



- Send the data if possible within 20 minutes after 0, 6, 12, 18 UTC, as often as you can, but without any obligation.

- For your next observation, click on the icon  to restart the procedure

Public data site: <http://www.sailwx.info/shiptrack/shipposition.phtml?call=YOURCALLSIGN>
 (you will find your data here 2 hours after your submission)

Contact: Martin Kramp, JCOMMOPS, mkramp@jcommops.org, +33 2 29 00 85 87